

BJ's Off-Road
Door Lock Spring Installation Instructions
www.bjsoffroad.com

This procedure can be done with the door latch in the vehicle but it is more difficult.

First, remove what is left of the old spring.



With a pair of needle nose pliers, fish one end of the spring into the hole shown here on the left.

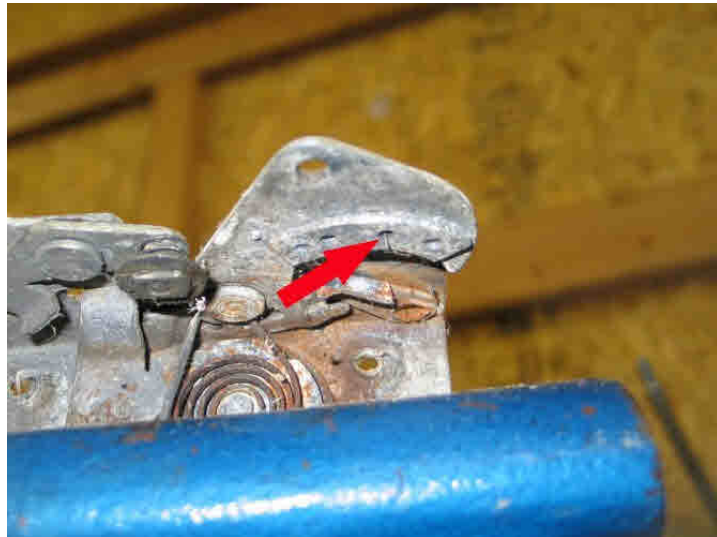
Next, grab the other end of the spring with needle nose pliers.





While gently separating the 2 pieces with a flat bladed screwdriver, work this end of the spring into the hole that is in the part of the mechanism that moves (2nd hole... see picture below). It may take a couple of tries but it should pop right in.

This picture shows the 2nd hole from below, you can see the end of the spring sticking out in this picture.



Now you are done with one, repeat the steps for the remainder of your door latches.

The springs are painted for easy identification:

Silver Spring: Right Hand (Passenger Side)

Yellow Spring: Left Hand (Driver Side)