



Door Pull Support Bracket Instructions



Notes:

1. Note: please read through all instructions prior to removing or installing any part. If you do not feel comfortable with the instructions or in your ability to install or modify your vehicle, please take to a reputable mechanic to have them perform the installation. BJ's Off-Road can not and will not determine your ability to install this kit, and the extent of our warranty and liability only cover the components of this kit, and do not cover improper installation, abuse, neglect, labor rates, etc. Contact us with any questions prior to installation.
2. These Brackets ONLY work with our Door Pull Supports



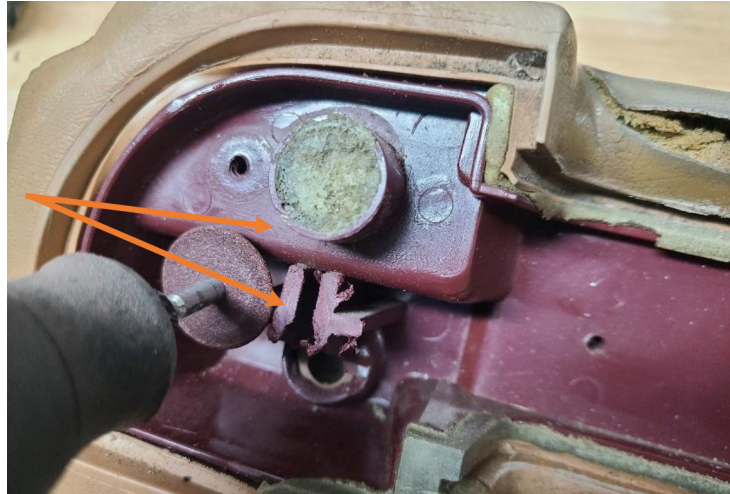
The door pulls on Full Size Jeep and AMC vehicles often have cracked or broken plastic on the back side of the door pulls; as a general precaution it is suggested to be gentle when installing fasteners into the original plastic that remains. ****Please use hand tools ONLY.**

Parts Included (Dependent on Option ordered)					
Door Pull Support			Door Pull Trim Brackets		
Ref #	Qty		Ref #	Qty	
A	2	Aluminum Door Pull Supports	F	4	Aluminum Brackets (Directional)
B	4	Plastic Screw #8 X 3/4"	G	4	10-24 Machine Screw
C	4	Plastic Screw #8 X 5/8"	H	8	1/8" Rivet
D	4	Sheet Metal Screw #14 X 3/4"	I	4	Locking Washer
E	4	Rubber Washers			

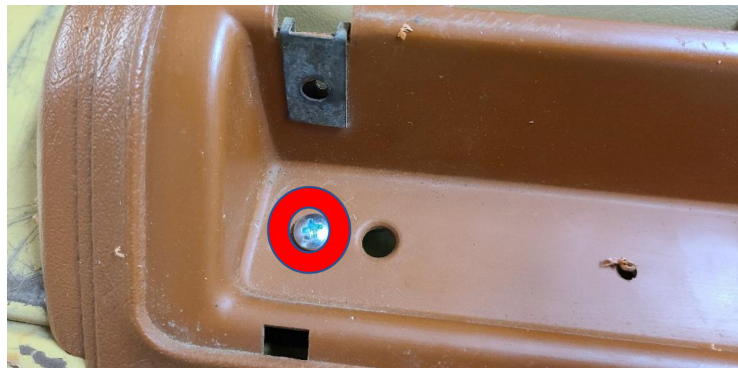
Remove the original plastic support on the back of the door pull by removing the rear 4 phillips screws, 2 lock washers and 2 screws with nuts that attach the support to the trim. Be careful when removing the locking washers to prevent breaking or damaging the plastic posts. After all fasteners are removed, gently pry up the black plastic support. Before installing the new aluminum support, the plastic channel pieces must be cut down to allow the aluminum piece to fit. You may find that the plastic has already broken and looks similar to the first picture; in this case no cutting is required.



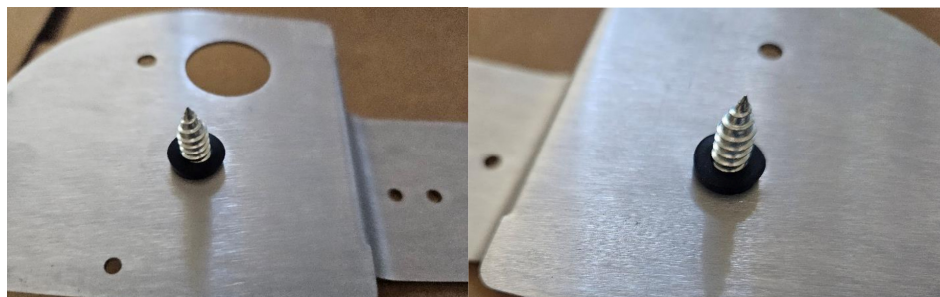
If needed, use a Dremel or cutting tool to cut plastic channel flush with where the arrows point:



Two original holes in the trim must be re-drilled to fit the provided #10-24 machine screws. Gently re-drill the holes to 3/16" each.



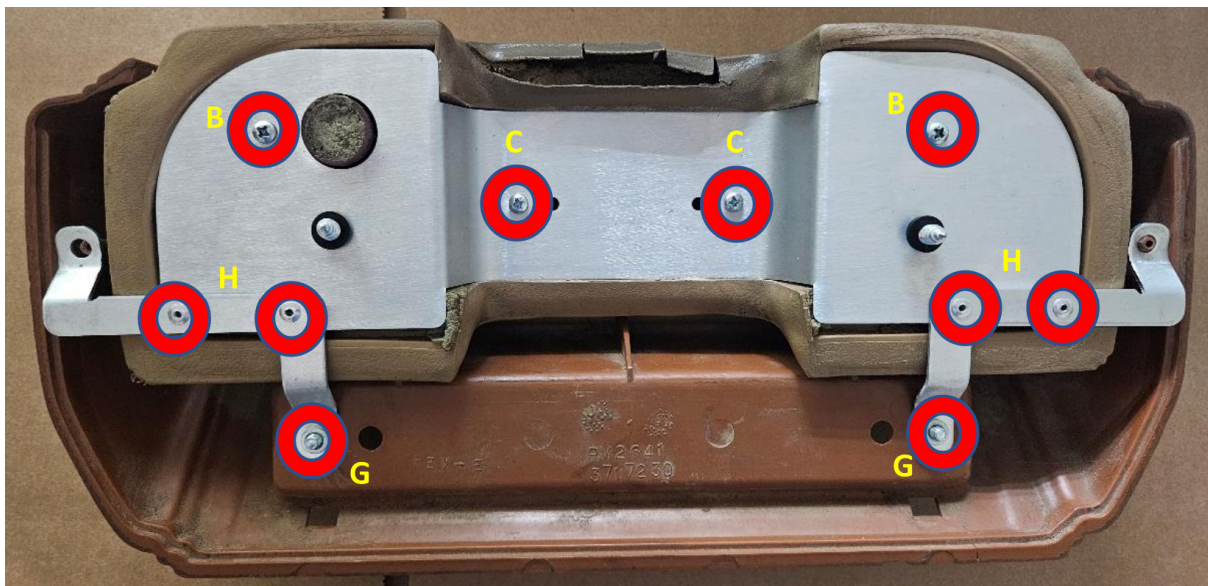
Use the included rubber washers to retain the #14 screws in the aluminum brackets with the threads facing the door panel.



Install the support by pushing the middle in first, then the support will pop snugly into the center section of the door pull between the vinyl sides.



Using the provided 1/8" rivets, rivet the trim brackets to the aluminum support. Install the plastic screws and snug the aluminum to the door pull. Be careful not to overtighten these screws, the longer screws ('B') go in the outer holes and shorter screws ('C') go in the inner holes. Snug the trim brackets to the trim via the machine screws ('G').



Install the locking washers, these do not need to be pushed very far down the post – approximately 0.25". The door panel fabric/material will push the trim away from the door as the door pull is snugged up to the door. By installing the locking washers looser (closer to the end) excessive stress on the plastic post will be avoided.



Install the door pull to the door via the #14 screws that were taped to the inside of the door pull with a philips screwdriver. Angle the screwdriver with the handle end lower to hit the screw.





Install the reflective trim with the original hardware.

