



Rear Door Pull Support Instructions



Notes:

1. Note: please read through all instructions prior to removing or installing any part. If you do not feel comfortable with the instructions or in your ability to install or modify your vehicle, please take to a reputable mechanic to have them perform the installation. BJ's Off-Road can not and will not determine your ability to install this kit, and the extent of our warranty and liability only cover the components of this kit, and do not cover improper installation, abuse, neglect, labor rates, etc. Contact us with any questions prior to installation.



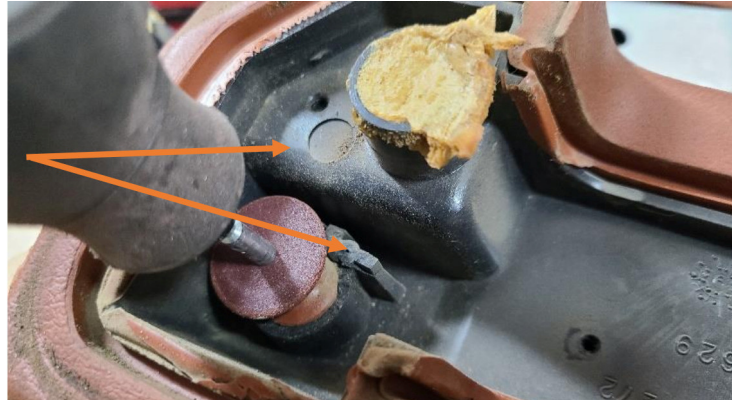
The rear door pulls on Full Size Jeep and AMC vehicles often have cracked or broken plastic on the back side of the door pulls; as a general precaution it is suggested to be gentle when installing fasteners into the original plastic that remains. **Please use hand tools ONLY.

Parts Included (Dependent on Option ordered)		
Door Pull Support		
Ref #	Qty	
A	2	Aluminum Door Pull Supports
B	4	Plastic Screw #8 X 3/4"
C	4	Plastic Screw #8 X 5/8"
D	4	Sheet Metal Screw #14 X 3/4"
E	4	Rubber Washers

Remove the original plastic support on the back of the door pull by removing the rear 4 phillips screws and gently prying the plastic up. Before installing the new aluminum support, the plastic channel pieces must be cut down to allow the aluminum piece to fit. You may find that the plastic has already broken and looks similar to the first picture; in this case no cutting is required.



If needed, use a Dremel or cutting tool to cut plastic channel flush with where the arrows point:



Use the supplied rubber washers to retain the #14 screws (see 'D' below) in the aluminum brackets with the threads facing the door panel.



Install the support into the door pull and fasten with #8 screws. The shorter 5/8" length screws (see 'C' below) are used in the outer middle holes and the longer 3/4" screws (see 'B' below) are used in the outermost holes.





This is the back side of the plastic piece that the aluminum support fastens to, too long of screws will result in cracking and damaging the plastic as seen below. Also be careful not to overtighten the screws to prevent stressing the plastic from pulling the two parts together.



Using a long phillips screw driver fasten the handle to the door:

